



MetroStats

Mapping the Demographics of Twin Cities Neighborhoods

December 2010

The data covered in this *MetroStats* highlight key findings from the last five years of ACS data collection—2005 through 2009. Whereas previous releases covered only 42 cities in the seven-county metropolitan area, the five-year dataset allows comparisons among individual census tracts. Census tracts generally have a population of 1,500 to 8,000 residents with an optimal size of 4,000 people.

The ACS allows for annual updates of local population and housing characteristics. As a continuous survey, the ACS utilizes smaller samples than the decennial census. Population distributions are estimated from the survey responses of 93,000 Twin Cities metro area households. The Census Bureau publishes margins of error for the ACS data. Readers should consider these error measures when analyzing ACS findings.

For more information, contact:

On demographics:
Todd Graham
todd.graham@metc.state.mn.us
651-602-1322

On housing, income and poverty:
Baris Gumus-Dawes
baris.dawes@metc.state.mn.us
651-602-1331

Publication No. 74-10-063

About the American Community Survey

The American Community Survey (ACS) is a nationwide survey of the characteristics of local population and housing. It is the successor to the decennial Census long-form questionnaire. The ACS is a continuous survey of addresses nationwide. The Census Bureau surveys about 3 million addresses each year with about 2 million households responding. Over a five-year period, ACS attempts to survey one in eight households.

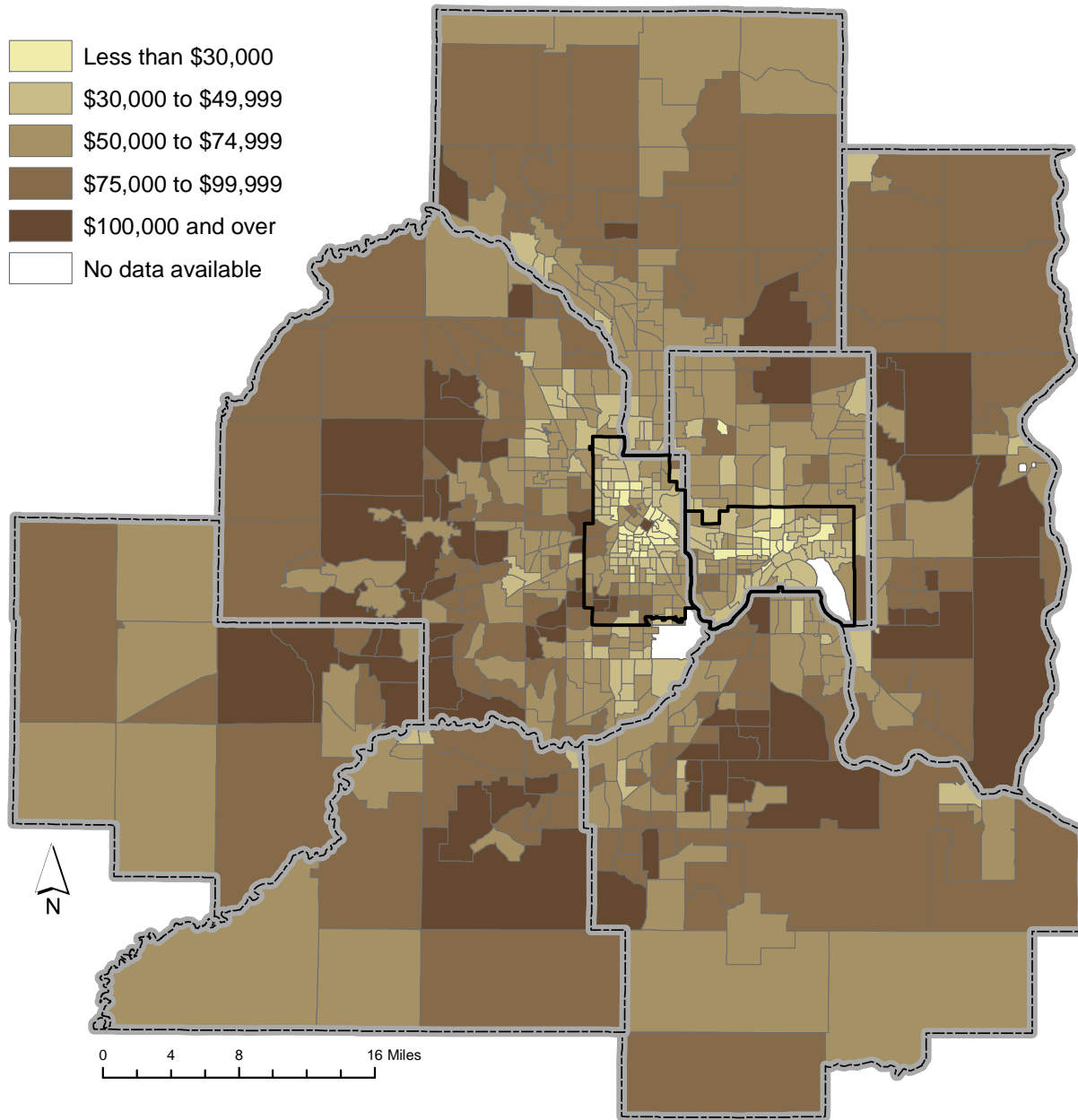
Geographic estimates in the ACS five-year data are based on data collected from January 2005 to December 2009. The ACS 2005-2009 data provide estimates for census tracts in addition to all counties, cities and townships. In contrast, previous ACS releases covered only the 42 largest cities in the Twin Cities metro area.

ACS one-year statistics are available for geographic units with 65,000 or more people; three-year data are available for geographic units with 20,000 or more people. The value of the five-year ACS data lies in geographic detail and complete coverage. Estimates based on five years of survey data also allow reasonable margins of error.

Contents

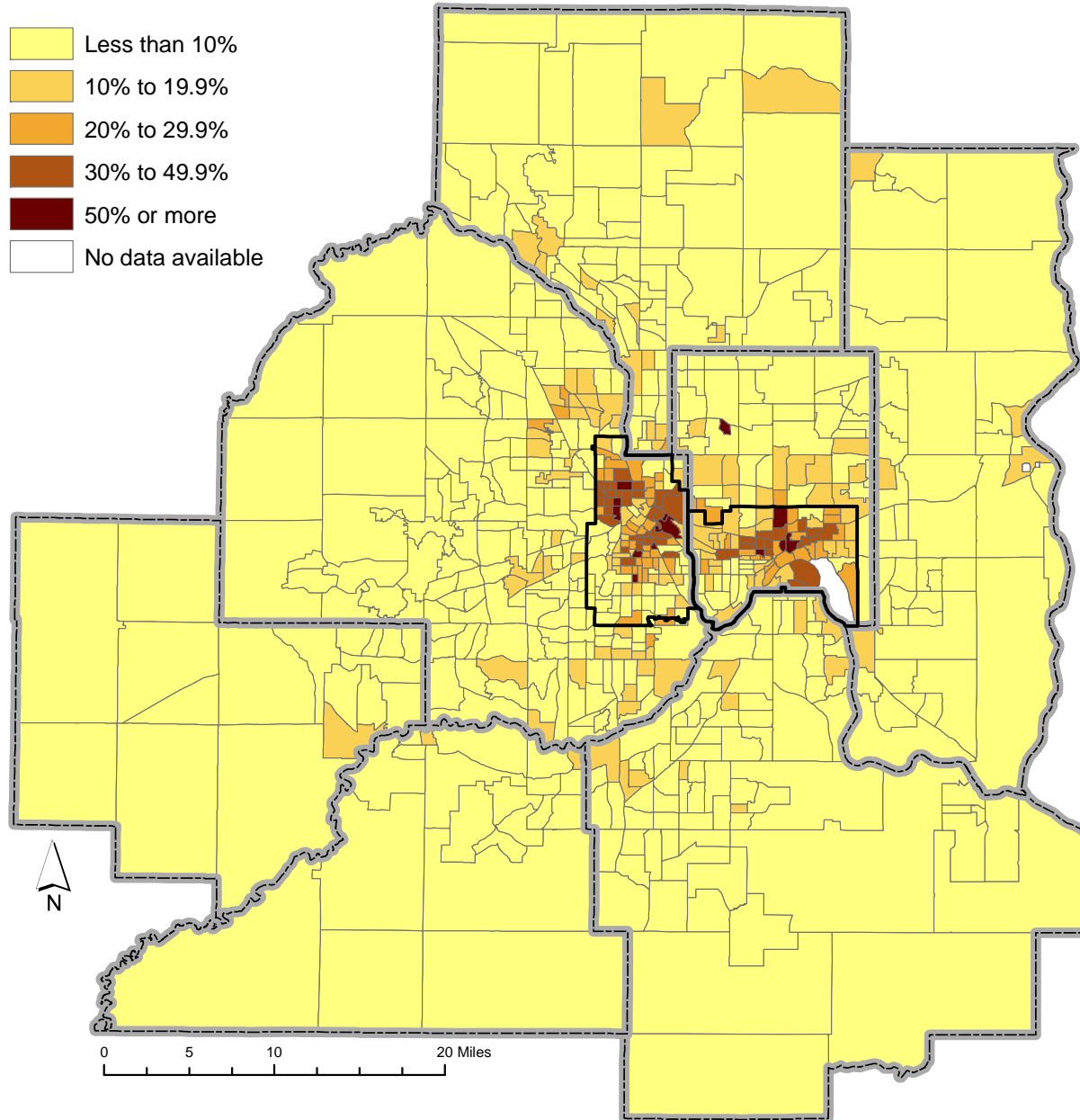
Median household income.....	p. 2
Poverty rates	p. 3
Persons of color	p. 4
Population age 65 and above.....	p. 5
Population with limited English proficiency	p. 6
Home ownership rates	p. 7
Households with housing cost burden.....	p. 8

Median Household Income



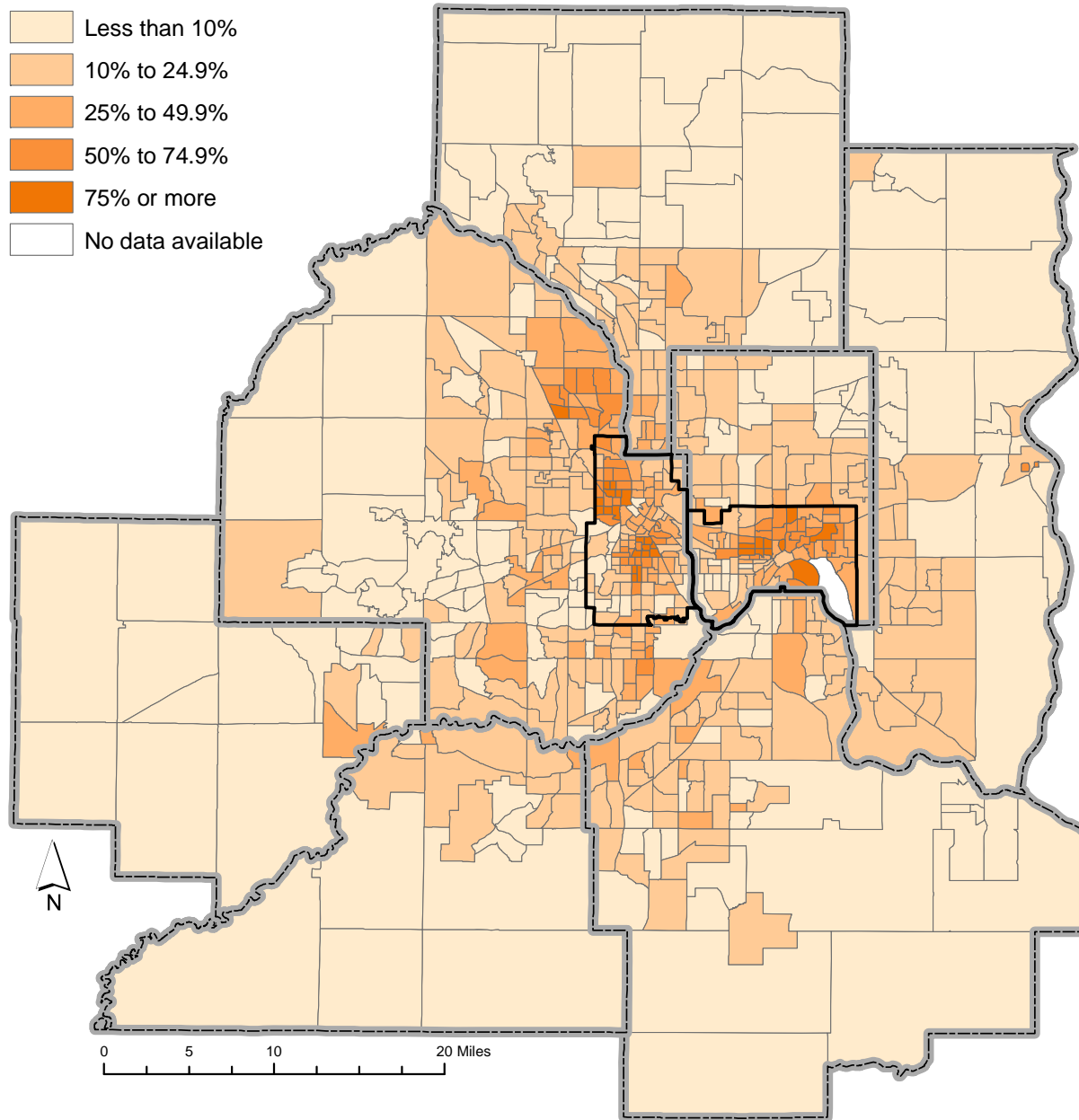
Source: U.S. Census Bureau, American Community Survey five-year data (2005-2009). The median household income is the level of household income at which half of households earn more and half earn less. The median household income is based on all households, including families, individuals living alone, and other household types. The median household income in the Minneapolis-St. Paul metro statistical area is \$65,109.

Share of population living in poverty



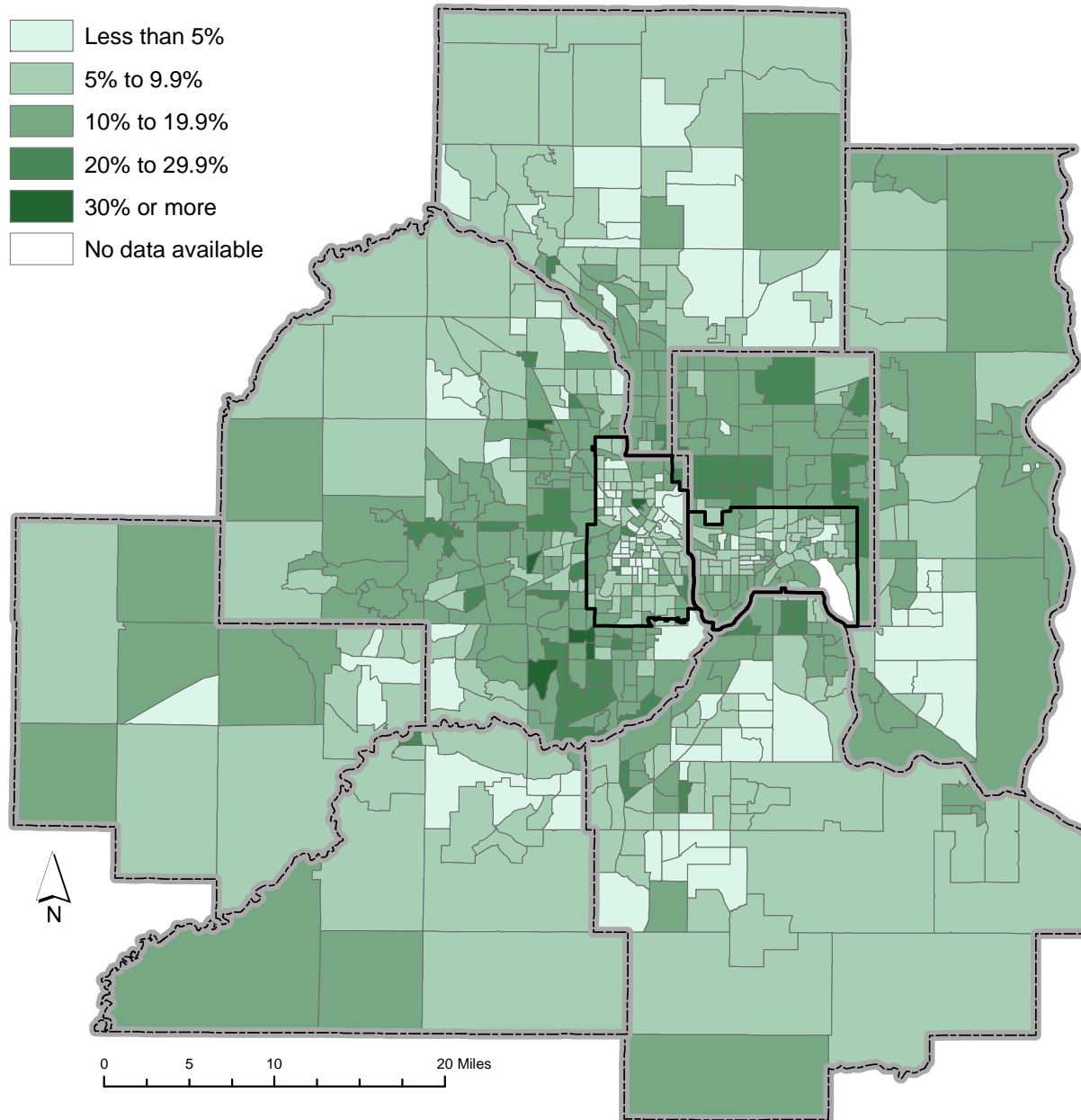
Source: U.S. Census Bureau, American Community Survey five-year data (2005-2009). The percentage of people in poverty is calculated by dividing the population below the federal poverty threshold by the total number of people whose poverty status is determined. The federal poverty thresholds for different family types and sizes are available at <http://www.census.gov/hhes/www/poverty/data/threshld/index.html>.

People of color as a share of the population



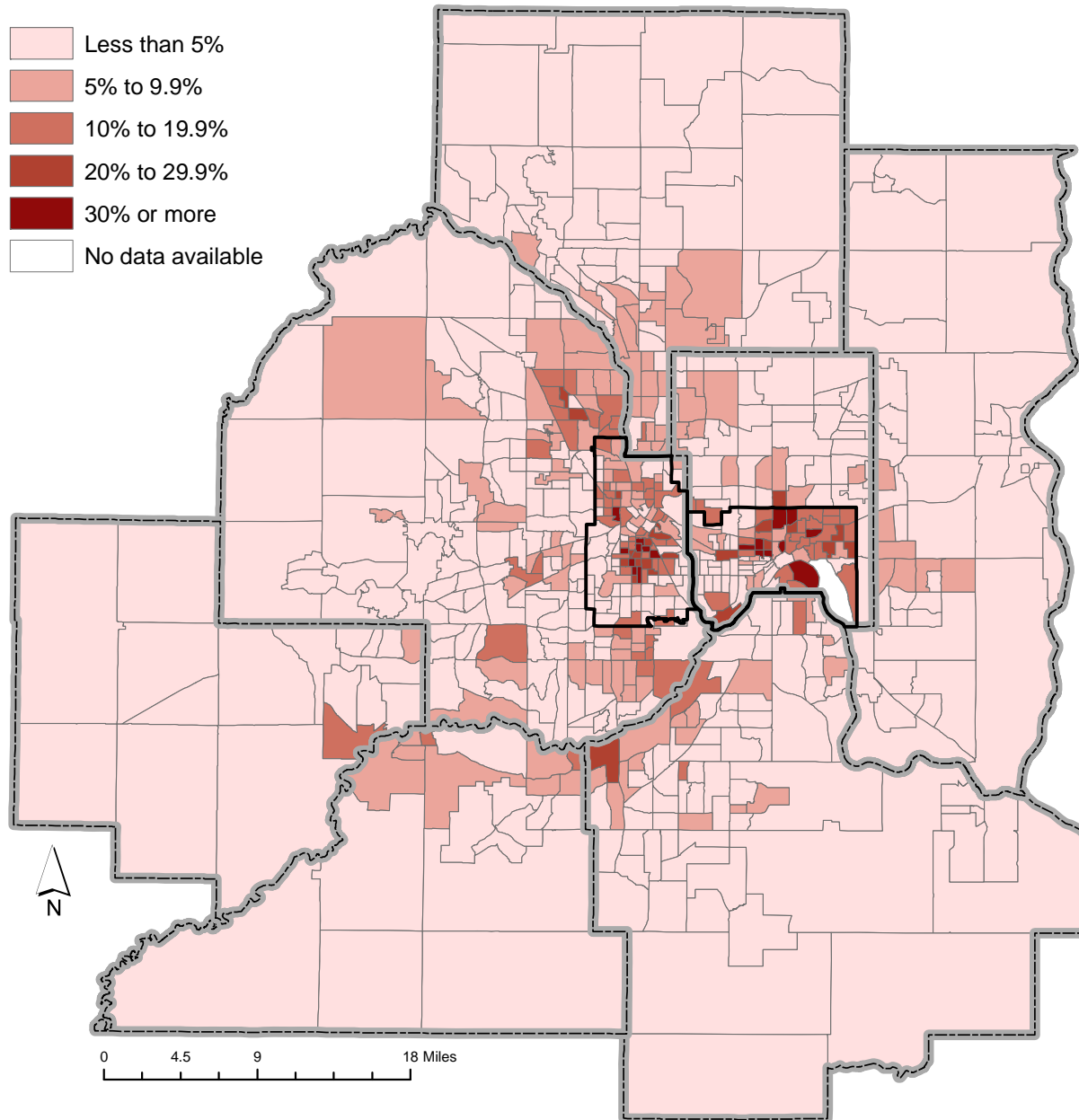
Source: U.S. Census Bureau, American Community Survey five-year data (2005-2009). The people of color measure represents people who identified themselves as non-white or Hispanic or multi-racial.

Share of the population age 65 and over



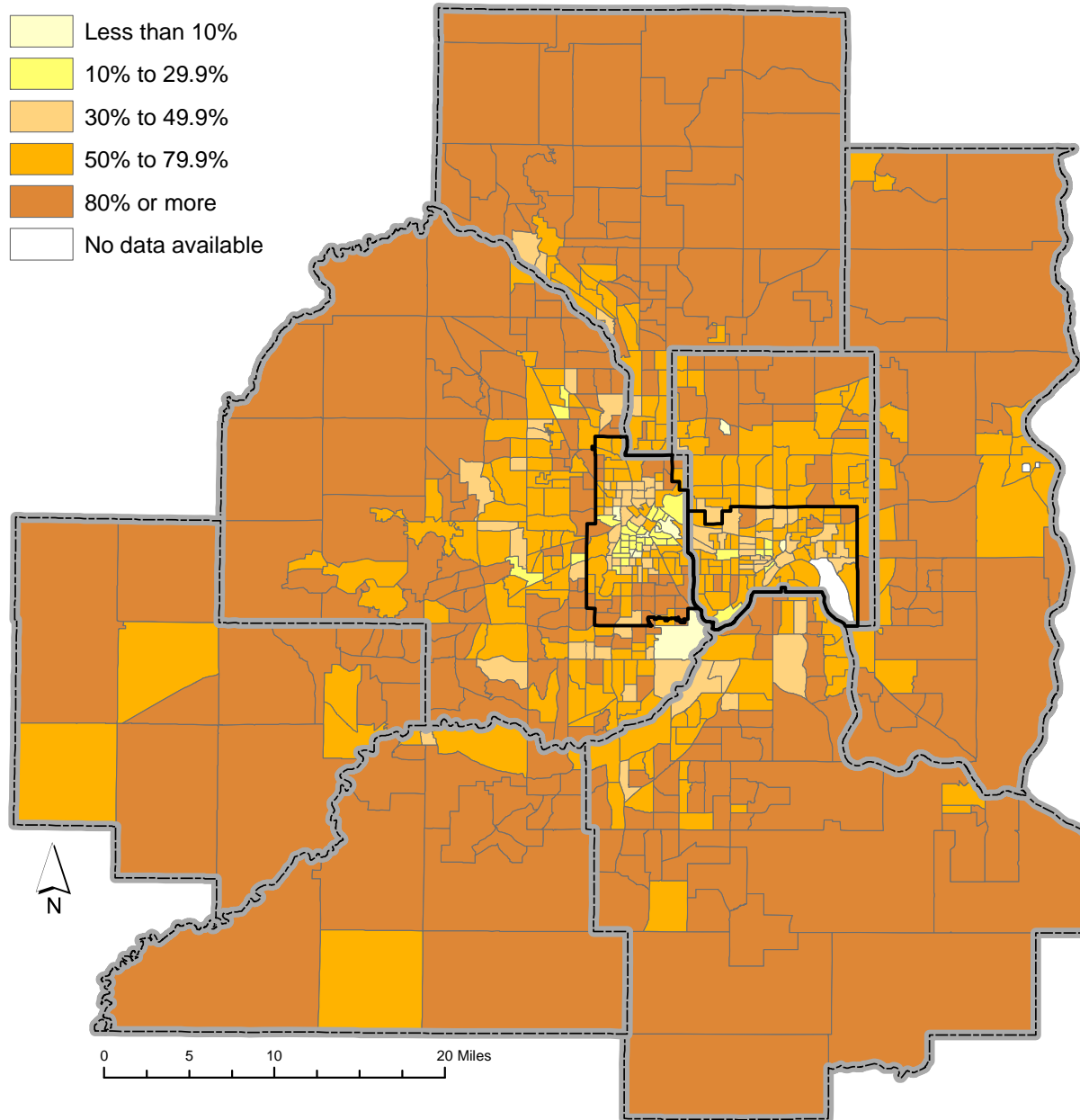
Source: U.S. Census Bureau, American Community Survey five-year data (2005-2009).

Share of people who speak English less than very well



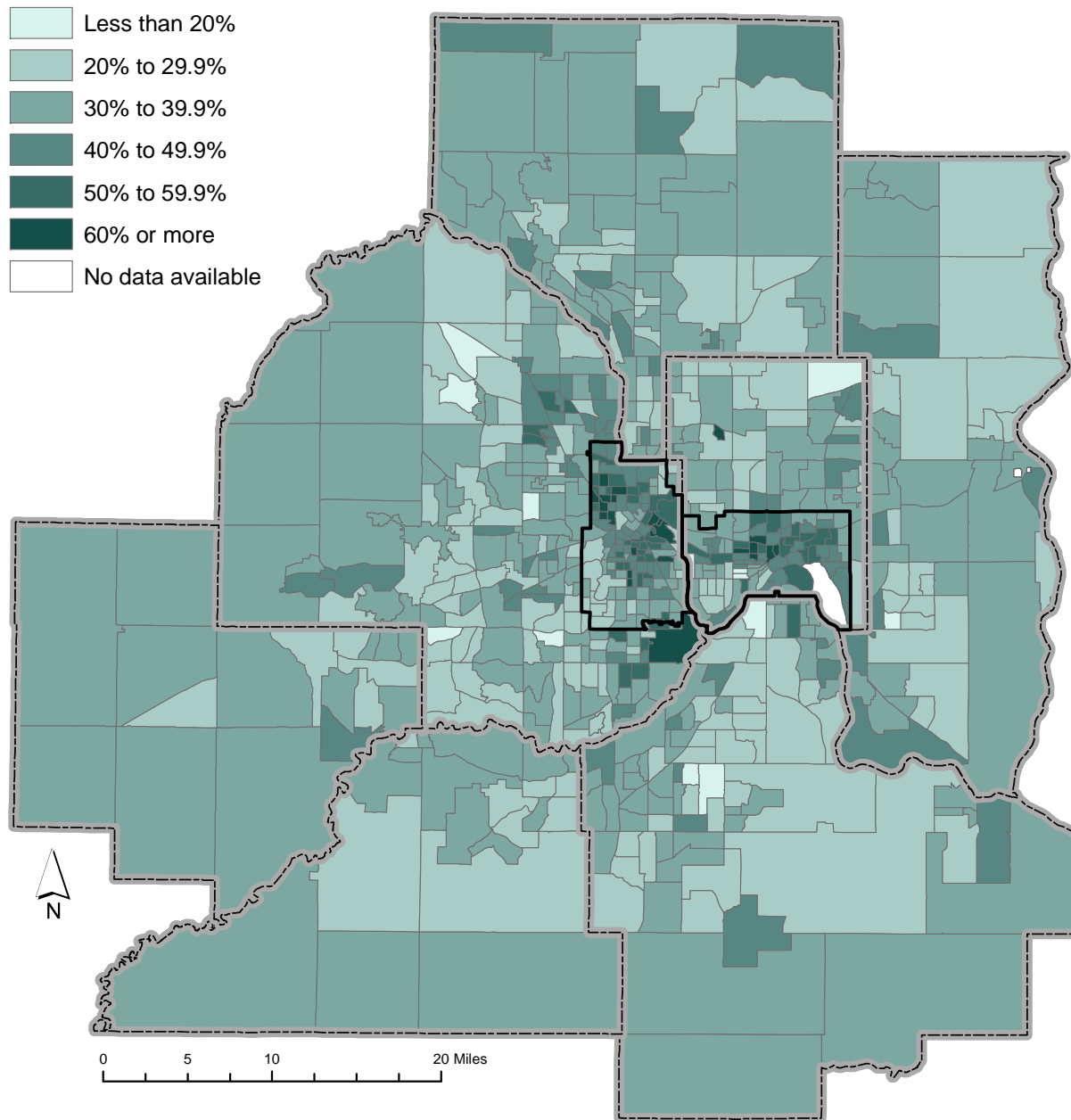
Source: U.S. Census Bureau, American Community Survey five-year data (2005-2009). The share of people who speak English less than well is calculated from Census Bureau Table B16001 Language Spoken At Home by Ability to Speak English for the Population 5 Years and Over, using the count of the population age 5 years and older as the denominator.

Home Ownership Rate



Source: U.S. Census Bureau, American Community Survey five-year data (2005-2009). Home ownership rate is calculated by dividing the number of owner occupied housing units by the total number of occupied housing units.

Share of households experiencing housing cost burden



Source: U.S. Census Bureau, American Community Survey five-year data (2005-2009). Cost-burdened households spend more than 30 percent of their income on mortgage and related owner costs or gross rent. The share of households experiencing cost burden in a community is calculated by dividing the number of households who are cost burdened by the total number of households with income (income greater than zero) and for whom housing costs are available.